



Heinzelmann CHEF-G HMC01



Thank you for your trust!

Congratulations on the purchase of your new "Heinzelmann CHEF-G" Grinder. For a safe handling of the product and to get to know the entire scope of product:

- Thoroughly read these instructions prior to initial use.
- Follow the safety instructions.
- The appliance should only be used as described in the instruction manual.
- Keep the instruction manual for reference.

We wish you a lot of joy with your new "Heinzelmann CHEF-G"!

Symbol on your appliance



The material of this appliance is food safe.

Pls follow guidance within this instruction manual to operate the machine, otherwise you will be risk in loss of the product warranty.

Please always check for updated Instruction Manual at www.heinzelmannpro.com/en/instruction-manual

1. Safety instructions

- This appliance is for indoor use only.
- The appliance must only be used for the purpose it was intended and designed for.
- The manufacturer is not liable for any damage caused by incorrect operation and improper use.
- Only use devices properly and as intended, for preparing food in kitchens and kitchens similar facilities such as breakfast restaurants, hotels, offices, and companies.
- The appliance must be disconnected from the main plug if left unattended or it is not in use, and prior to assembly, disassembly, cleaning.
- If the power cable of this appliance should become damaged, it must be replaced by the manufacturer, the manufacturer's customer service department.
- Prior to replacement of parts or attachments which move when in operation, the appliance must be switched off and disconnected.
- Turn off the appliance before pulling the plug out of the socket.
- Never attempt to open the casing of the appliance yourself.
- Do not insert any objects in the casing of the appliance.
- Never attempt to open the casing of the appliance yourself.
- Failure to do so could pose a safety risk to the user and could damage the appliance. Only use original parts and accessories.
- Appliances can be used by persons with reduced physical, sensory or mental capabilities or lack of experience and knowledge if they have been given supervision or instruction concerning use of the appliance in a safe way and if they understand the hazards involved. This appliance shall not be used by children. Children shall not play with the appliance.
- Keep the appliance and its cord out of reach of children.
- Never leave the appliance unattended during use.
- Never carry the appliance by the cord.
- Please take note of the chapter on cleaning.
- The max capacity is no more than the max mark. Short-time operating. Use the appliance for no longer than 1 minute, then take at least a 3 minute break.
- Do not process hard substances (e.g., ice, bones, nuts with shells)
- DO NOT ADD WATER or other liquids to the Dry or Wet grinding cup. Excess moisture may affect performance and damage the unit.

Instructions for safe operation

DANGER! Risk of electric shock due to moisture

- The base unit, the power cable and the main plug must not be immersed in water or other liquids.
- If the entire appliance falls into water, disconnect the main plug immediately. Only then is it safe to retrieve the appliance. Do not use until the appliance has been checked by a certified technician.
- Should liquids enter the base unit, pull out the mains plug immediately. Have the appliance checked by a certified technician before reusing.
- Never touch the appliance or the plug with wet or damp hands.

DANGER! Risk of electric shock

- Only plug the main plug into the wall socket after the appliance has been completely assembled.
- Only connect the main plug to a properly installed and easily accessible grounded wall socket whose voltage and frequency corresponds to the specifications on the rating plate. The wall socket must continue to be easily accessible after the appliance is plugged in, in case of emergency the appliance can be unplugged immediately.
- Ensure that the power cable cannot be damaged by sharp or hot objects.
- Do not place the appliance on a heating object (gasoline, electric, charcoal cooker, etc.) Keep the appliance away from any hot surfaces and open flames. Always operate and place the appliance on a horizontal, stable, clean, heat-resistant, and dry surface.
- Do not place the appliance at the edge of the counter or table side to avoid accidents. Also to ensure the surface where the appliance is placed on is capable of supporting the overall weight of the appliance.
- Do not wrap the power cable around the appliance.
- Even after it has been switched off, the appliance has not been completely disconnected. In order to

fully disconnect it, pull out the power plug.

- Ensure that the power cable never develops into a trip hazard, and that nobody can get caught in or stand on it.
- Do not use the appliance near explosive or flammable materials.
- When using the appliance, ensure that the power cable cannot be trapped or crushed.
- When removing the main plug from the wall socket, always pull the plug and never the cord.
- Disconnect the main plug from the wall socket ...
 - ... if there is a fault,
 - ... while you do not use the Heinzelmännchen CHEF-G,
 - ... before you assemble or disassemble the Heinzelmännchen CHEF-G
 - ... before you clean the Heinzelmännchen CHEF-G and
 - ... during thunderstorms.
- Do not use the appliance if there is visible damage to the appliance or the power cable.
- To avoid any risk, do not make modifications to the product.
- Do not attempt to repair the appliance yourself. In case of malfunctions, repairs are to be conducted by qualified personnel only.
- Failure to follow these instructions could cause a risk to life.

DANGER! Always operate and place the appliance on a horizontal, stable, clean, heat-resistant and dry surface.

DANGER! Risk of injury through burning

- The surfaces of the appliance might become hot during operation.
- Only transport the appliance when it has cooled down.
- Wait for the appliance to cool down before cleaning or storing.
- Place the appliance exclusively on a level, dry, non-slip and waterproof surface, so that it can neither fall nor slip off.

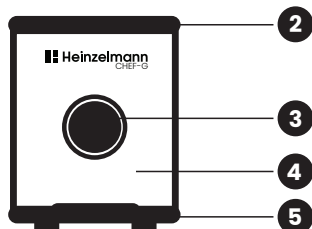
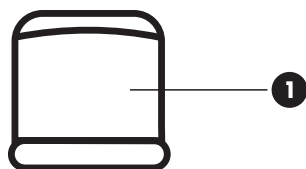
- Never place the appliance on a hot surface, e.g. hot plate, therefore place the appliance on a waterproof surface.
- Do not use any astringent or abrasive cleaning agents.

2. Technical Parameters

Rated voltage :	220 -240 V
Rated frequency :	50/60 HZ
Rated power :	350 W
Cord Type :	cable 2*0.5mm ² * 1.5mm
Size :	120 x 120 x 350 mm



3. Product Structure



6



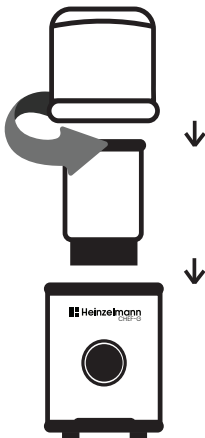
7

1. Lid
2. Top body
3. Switch button
4. Body
5. Base
6. Dry grinding cup
7. Wet grinding cup

4. Operating Instructions

PRELIMINARY CHECKS

1. After removing the packaging, make sure the product is complete and undamaged and that all accessories are present. Do not use the appliance if it is visibly damaged. Contact with the technical assistance service.
2. Connecting the appliance. Check that the mains power supply voltage corresponds to the value indicated on the rating label. If the power socket does not match the plug on the appliance, have the socket replaced with a suitable type, or change the plug by a qualified professional.



OPERATION

1. Place the appliance on a flat surface.
2. Place the container directly on the appliance.
3. Pour the desired amount of dry ingredients into the container.
4. Tighten the lid by turning it in an anti-clockwise direction. A safety device prevents switch-on if the lid is not well inserted.
5. Do not attempt operation without the

cover being in place.

6. Extract the necessary amount of wire and plug into the socket.
7. Rotate the start knob till you reach the desired result.
8. Unplug the unit.

Recommended Ingredients:

Dry Grinding Cup (for low-moisture contents):

- Coffee beans
- Dried spices (e.g., cinnamon sticks, bay leaves, dried herbs)

IMPORTANT: Ensure all ingredients are completely dry to prevent clogging or motor strain/overheating.

Wet Grinding Cup (for moist ingredients):

- Fresh aromatics (e.g., ginger, garlic, onions)
- High-moisture vegetables (e.g., tomatoes, small carrots cubes, chillies)

IMPORTANT: Avoid overfilling to ensure optimal grinding consistency.

IMPORTANT SAFETY ADVISE:

- Do not process hard substances (e.g., ice, bones, nuts with shells)
- DO NOT ADD WATER or other liquids to the Dry or Wet grinding cup. Excess moisture may affect performance and damage the unit.

NOTE:

Suggested Operation Time : 60 seconds (3-minutes pause is required to allow the motor to cool down after each operation)

5. Cleaning

1. Be sure to unplug this appliance before cleaning. To protect against electrical shock, do not immerse cord, plug or unit in water or liquid.
2. Remove residues using the brush. Do not touch the blade because it is sharp.
3. Do not immerse into water.
4. To remove residue or aromas left behind grind one tablespoon of baking soda in the bowl then wipe thoroughly.
5. Clean cups thoroughly after each use to prevent taste residues contamination.
6. Clean the exterior of the appliance using a soft cloth.
7. Store excess cord by pushing a section at a time into the cord storage area in the base of the unit.

6. Thermal Protection

The Heinzelmann CHEF-G is equipped with thermal protection that detects overheating conditions of the unit, ensuring that CHEF-G operates within safe limits. If the motor or components are subjected to excessive heat, they can deteriorate and fail.

The unit shuts down when temperatures exceed safe limits, preventing fires or damage. After the motor cools down, power is automatically restored to resume operation.



Scan the QR Code or Visit here
www.heinzelmannpro.com/en/instruction-manual
to view the instruction manual in different languages